

Connect to the future with xEnergy

xEnergy



xEnergy is a system with endless combination possibilities for power distribution boards. It is especially designed for the infrastructures of buildings and for industrial applications, up to 4000 A.

The xEnergy system offering from Moeller provides optimum reliability in power distribution. It comprises switching and protective devices, the associated mounting systems, the switchgear cabinet, and includes planning and calculation tools.

Excellent mechanical adaptation of the switchgear cabinet components to the Moeller switching devices achieves short fitting times and great flexibility.

The complete units consisting of switching devices, mounting systems and switchgear cabinet furthermore, are type-tested to IEC/EN 60 439. This guarantees a high safety level.



Globe Trade Center (GTC), having built the Galeria Kazimierz on an area of 36 000 square metres of land in Krakow, Poland, is now running this combined shopping and leisure centre. Messrs. Hulanicki Bednarek Sp. z o.o., the system builders, are Moeller's partner for xEnergy and MODAN in this project. Hulanicki Bednarek and Moeller Poland have long had a good business relationship, built to a large extent on the system builder's trust in Moeller's competent customer care in Poland.



The low-voltage main distribution centre designed for the Galeria Kazimierz includes 62 sections of xEnergy, approximately 50 metres long, and supplied by three main power distribution boards. The main busbars transfer 2500 A, 3200 A and 4000 A. In addition to the xEnergy sections, the installation includes circuit-breaker sections containing IZM and NZM 4 with mechanical interlocking and busbar trunking connections. xEnergy outgoing sections with NZM 1 to NZM 3 power outgoers are used for sub-distribution, as are combination motor-starters that include PKZ and DIL contactors. xEnergy sections with power factor correction and xEnergy corner sections complete the installation.



On call

Think of Moeller as your business partner – a partner who can support you in providing the highest levels of service to your customers, a partner who can advise you on how to get the results you want. Each module has been carefully designed and thought through to ensure complete consistency – from the device itself, the mounting system, the enclosure, right up to the software tools.

Partnering with Moeller gives you the competitive edge over your competitors: it means you can provide optimum added value in your own panel building designs, and can enjoy the reassurance of knowing that you are using type-tested systems that are always state-of-the-art. In short, you will be connecting to the future with xEnergy.

All products in the xEnergy range can be supplied either functionally grouped in flat packs, or as switchboards fully pre-assembled according to your specifications.

Enclosure components are supplied on demand, exactly matched to your individual requirements, including type tests.

xEnergy power distribution

expect progress, provide innovations



xEnergy product features

- Enclosure for side-by-side and stand-alone installation
- Degree of protection IP 31 or 55
- Main busbars up to 4000 A
- 2 main busbar systems can be installed per section
- Clear separation into functional areas form 1 to form 4b for enhanced protection of personnel and systems
- Widths of 425, 600, 800, 1000 and 1200 mm
- Height 2000 mm
- Colour RAL 7035 (further possible)
- Power grid systems TN-C, TN-C-S, TN-S, TT, IT
- Type-tested switchgear combinations (TTA) according to IEC/EN 60439-1
- Optimised for 3- and 4-pole switchgear from Moeller



Circuit-breakers IZM and NZM for xEnergy XPower sections

- Clear and symmetrical design with just one circuit-breaker per section reduces the number of busbar assemblies and saves mounting time
- Simple installation with cable connection system for connection on the section width without drill holes



Circuit-breakers NZM and PKZ for xEnergy XFixed sections

- High packing density with max. 38 modules in a section, featuring optimum device efficiency
- Flexible module installation to form 4 with swivelling cover plate
- Simple module installation to form 2 on a single level
- Multi-flexible combination features of the functional areas and the busbars according to IEC/EN 60439 and local installation habits



Power sections XP*

- Power incomers or outgoers up to 3200 A
- For cable connection from below
- For busbar system on rear at top
- Section height 2000 mm / section depth 600 mm



Section width mm	For circuit-breakers, 3-pole, fixed installation/ drawer unit	I_e up to A	I_{cc} up to (400 V AC) kA	Degree of protection	Part No.
Power sections for air circuit-breaker IZM, 800 - 3200 A to form 4, external operation					
425	IZMB(N)1-...	800 – 1600	65	IP31	XSI043
				IP55	XSI045
600	IZMB(N)1-...	800 – 1600	65	IP31	XSI063
	IZMB(N, H)2-...	800 – 3200	100	IP55	XSI065
800	IZMB(N)1-...	800 – 1600	65	IP31	XSI083
	IZMB(N, H)2-...	800 – 3200	100	IP55	XSI085



Power sections for compact circuit-breaker NZM4, 3-pole, fixed installation, 800 -1600 A to form 4 (for NZM 4 with manual or remote operator), external operation					
425		800 – 1600	100	IP31	XSNF0443
				IP55	XSNF0445
600		800 – 1600	100	IP31	XSNF0643
				IP55	XSNF0645
Power sections for compact circuit-breakers NZM4, 3-pole, drawer unit, 800 -1600 A to form 4 (for NZM 4 with manual operation), external operation					
425		800 – 1600	100	IP31	XSNW0443
				IP55	XSNW0445
600		800 – 1600	100	IP31	XSNW0643
				IP55	XSNW0645



Power sections for compact circuit-breakers NZM4, 3-pole, fixed installation, 800 -1600 A to form 2, operation behind section height door					
425		800 – 1600	100	IP31	XSNF0423
				IP55	XSNF0425
600		800 – 1600	100	IP31	XSNF0623
				IP55	XSNF0625
Power sections for compact circuit-breakers NZM4, 3-pole, drawer unit, 800 -1600 A to form 2, operation behind section height door					
425		800 – 1600	100	IP31	XSNW0423
				IP55	XSNW0425
600		800 – 1600	100	IP31	XSNW0623
				IP55	XSNW0625

* See FK4810-1143GB-INT for further versions

Outgoer sections XF*

- Outgoers with circuit-breaker PKZ and NZM, switch-fuse units and fuse-load switch units up to 630 A
- For rear busbar system top or rear bottom
- Section height 2000 mm / section depth 600 mm



Section width mm	Degree of protection	Part No.
---------------------	----------------------	----------

Outgoer sections for horizontal, fixed installed 3 or 4-pole compact circuit-breakers NZM 1-3 up to 630 A to form 2b, for installation of mounting plates module width 600 mm

1000	IP31	XSB1023
	IP55	XSB1025
1200	IP31	XSB1223
	IP55	XSB1225



Outgoer sections for horizontal, fixed installed 3 or 4-pole compact circuit-breakers NZM 1-3 up to 630 A to Form 4b, for installation of mounting plates module width 600 mm

1000	IP31	XSB1043
	IP55	XSB1045
1200	IP31	XSB1243
	IP55	XSB1245



Outgoer sections for plug-in unit outgoers with 3-pole switch-fuse units up to 630 A, horizontal for external operation

1000	IP31	XSS10
1200	IP31	XSS12



Outgoer sections for fixed installed 3-pole switch-fuse units up to 630 A, vertical for external operation

600	IP31	XSL06
800	IP31	XSL08
1000	IP31	XSL10

Empty sections XG*

- Mounting system for modular installation devices, terminals, circuit-breakers and fuse switch-disconnectors
- Individual fixed installation on mounting plates up to 630 A
- xStart control engineering adapter systems
- Automation engineering
- For rear busbar system on rear at top or bottom
- Section height 2000 mm / section depth 600 mm



Section width mm	Degree of protection	Part No.
---------------------	----------------------	----------

Empty sections for customised devices

425	IP31	XSE043
	IP55	XSE045
600	IP31	XSE063
	IP55	XSE065
800	IP31	XSE083
	IP55	XSE085

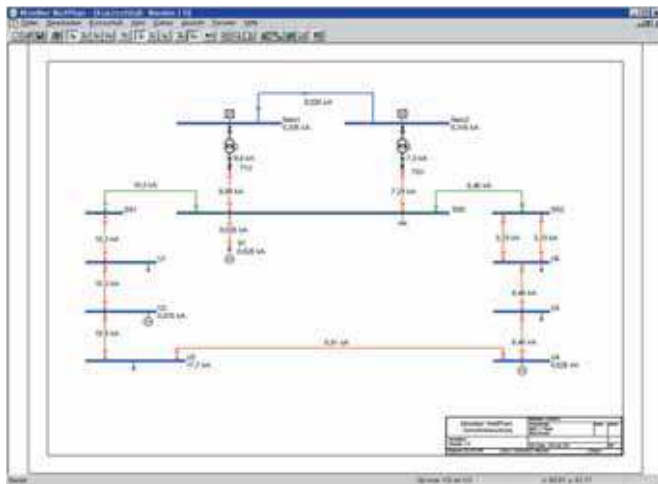
* See FK4810-1143GB-INT for further versions

Software Tools

Networked expertise, know-how as a competitive edge.

Moeller also offers a comprehensive set of tools. The software tools for planning, documentation and calculation provide all the support planners, panel builders and installation technicians need. The specially

developed Moeller Toolbox includes tools for network calculations, configuration, quotations, engineering and ordering. Using Moeller tools, which have the system-specific data already built-in, means you can work faster and more efficiently.



NetPlan

NetPlan supports you in the reliable and problem-free planning of low-voltage networks (meshed and radial networks). It offers you tried and tested functions and is practical and flexible.

Typ	Hersteller	Leistungsstufe	AC-3400V/5,5kV 3p
DLEDAAM(VSDH)	Leistungsstufe	AC-3400V/5,5kV 3p	
DLEDAAM(110-50300AL)	Leistungsstufe	AC-3400V/5,5kV 3p	
DLEDAAM(110-50300AL)	Leistungsstufe	AC-3400V/5,5kV 3p	
DLEDAAM(110-50300AL)	Leistungsstufe	AC-3400V/5,5kV 3p	
DLEDAAM(110-50300AL)	Leistungsstufe	AC-3400V/5,5kV 3p	
DLEDAAM(110-50300AL)	Leistungsstufe	AC-3400V/5,5kV 3p	

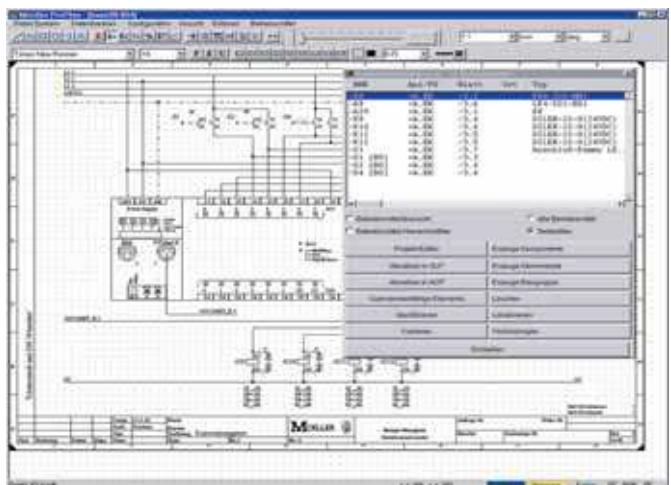
MatSelect database

With MatSelect, you can manage all your product and material data in user-defined and standard classification.



ConFix xEnergy

The ConFix tool helps you configure the required xEnergy switchboard system simply and quickly. In this way, you can make your own quotations and generate accurate parts lists in no time at all and at the push of a button.



ProPlan

For the automatic generation of all types of plans, such as circuit diagrams, terminal tables, general arrangement plans, cable plans and parts lists. ProPlan is a simple and user-friendly tool that helps you create circuit diagrams faster and gives you a good overview at all times.