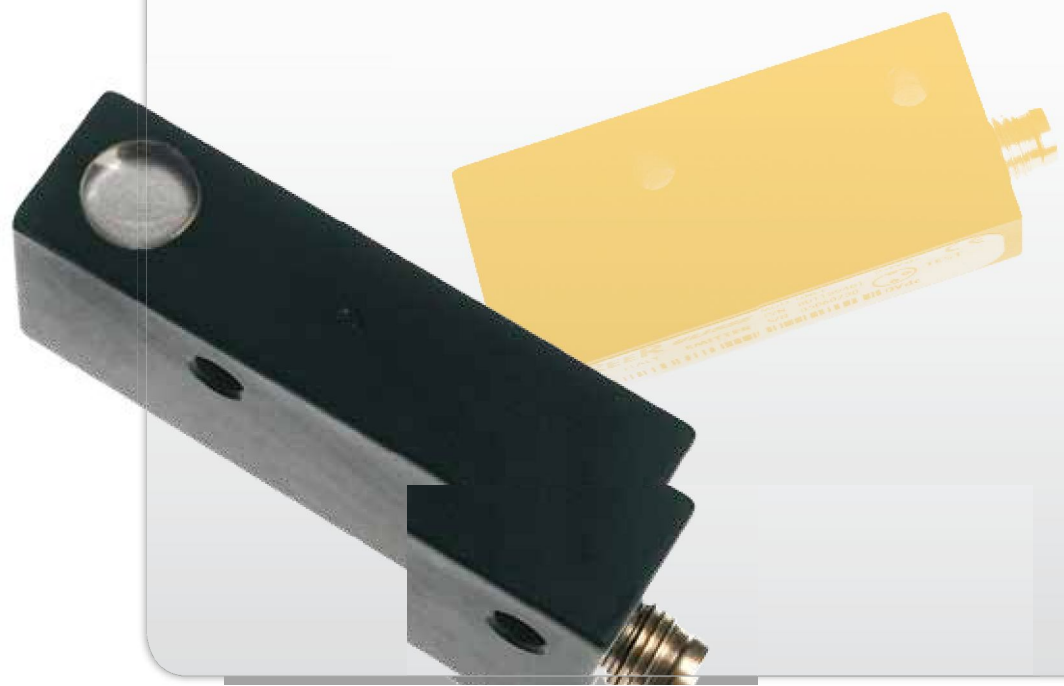


ILION



ULISSE

ILION

MAIN FEATURES

ILION is a Type 2 safety photocell with M18 cylindrical **metal body**. The protection system can be composed of 1, 2, 3 or 4 single beam photocells connected to an AU SX or AU SXM control unit **with Muting** (for details on the interface see AU SX and AU SXM control units).

The compact size of the photocells makes it possible to fit the protection system into very small spaces, while the possibility to use more photocells provides the maximum flexibility in positioning the protective beams.



PHOTOELECTRIC SENSOR TECHNICAL DATA

Model	IL 10	IL 20
Safety level	Type 2 according to IEC/TS 61496-2 SIL 2 – SILCL 2 according to IEC 61508 - IEC 62061 PL d – Cat. 2 according to ISO 13849-1 (with control unit AUS X or AUS XM)	
Minimum detectable object (mm)	12	
Max. range (m)	8	20
Number of photocells per control unit	from 1 to 4	
Response time for each photocell (ms)	7	
Output	2 PNP – 100 mA	
Signalling	status led	
Power supply (Vdc)	24 ± 20%	
Electrical connections	M12 - 4 poles for emitter and receiver	
Max. cable length (m)	50 (between sensor and control unit)	
Operating temperature (°C)	0 ÷ 55	
Protection rating	IP 67	
Dimensions (mm)	Ø 18 x 85	



Safety level:

Type 2

**SIL 2 – SILCL 2
PL d – Cat. 2**

ORDERING INFORMATION (for ordering codes see page 194)**Each Ilion photocell includes:**

- Emitter and Receiver pair
- Multi-language instruction manual complete with CE declaration of conformity

CONNECTORS

The following connectors are available for the Ilion photocells, to be ordered separately:

Connectors for Ilion emitter and receiver

Model	Description
CD 5	M12 straight connector, 5 poles, pre-wired cable 5 m
CD 10	M12 straight connector, 5 poles, pre-wired cable 10 m
CD 15	M12 straight connector, 5 poles, pre-wired cable 15 m
CD 20	M12 straight connector, 5 poles, pre-wired cable 20 m
CD 25	M12 straight connector, 5 poles, pre-wired cable 25 m
CD 95	M12 90° angle connector, 5 poles, pre-wired cable 5 m
CD 910	M12 90° angle connector, 5 poles, pre-wired cable 10 m
CDM 915	M12 90° angle connector, 5 poles, pre-wired cable 15 m
CDM 9	M12 straight connector, 5 poles with screw terminal, PG9 cable gland
CDM 99	M12 angle connector, 5 poles with screw terminal, PG9 cable gland

ADJUSTABLE FIXING BRACKET

Model	Description
IL FB	Set of 2 adjustable brackets
The IL FB bracket permits both vertical and horizontal adjustment of the optical axis of the photocell.	

ULISSE

MAIN FEATURES

ULISSE is a Type 2 safety photocell with metal body and 3-pole M8 connector.

The protection system can be composed of 1, 2, 3 or 4 single beam photocells connected to an AU SX standard or AU SXM control unit **with Muting** (for details on the interface see AU SX and AU SXM control units).

Thanks to the very small size, the anodised aluminium case and the glass lenses free from electrostatic dust attraction, ULISSE is the ideal solution for the protection of **weaving machines** as well as of other applications characterised by high levels of mechanical stress or very restricted spaces.



PHOTOELECTRIC SENSOR TECHNICAL DATA

Model	UPC
Safety level	Type 2 according to IEC/TS 61496-2 SIL 2 – SILCL 2 according to IEC 61508 - IEC 62061 PL d – Cat. 2 according to ISO 13849-1 (with control unit AUS X or AUS XM)
Minimum detectable object (mm)	8
Max. range (m)	6
Number of photocells per control unit	from 1 to 4
Response time for each photocell (ms)	7
Output	PNP 100 mA
Signalling	status led
Power supply (Vdc)	24 ± 20%
Electrical connections	M8 - 3 poles for emitter and receiver
Max. cable length (m)	50 (between sensor and control unit)
Operating temperature (°C)	0 ÷ 55
Protection rating	IP 65
Dimensions - h x w x d (mm)	58 x 15 x 25



Safety level:

Type 2

SIL 2 – SILCL 2
PL d – Cat. 2

ORDERING INFORMATION (for ordering codes see page 194)**Each Ulisse photocell includes:**

- Emitter and Receiver pair
- Multi-language instruction manual complete with CE declaration of conformity

CONNECTORS

The following connectors are available for the Ulisse photocells, to be ordered separately:

Connectors for Ulisse emitter and receiver

Model	Description
C 85	M8 straight connector, 3 poles, pre-wired cable 5 m
C 815	M8 straight connector, 3 poles, pre-wired cable 15 m
C 895	M8 90° angle connector, 3 poles, pre-wired cable 5 m