

Harmony

Tried-and-tested throughout the entire world and characterised by extreme robustness, groomed ergonomics and maximum installation simplicity, the Harmony control and signalling ranges provide the ideal solution for your varying application requirements due to an offer that is unmatched in its extensiveness.



2

Rely on the expertise and know-how of the worldwide leader in operator dialogue components. Our extensive ranges of Harmony and Magelis Human/Machine Interfaces guarantee simple integration and efficient configuration of your dialogue applications.



HMI Magelis

A complete, robust and scalable HMI offer from Panels to Industrial PCs, to answer your needs in a wide range of applications. Thanks to its added value capacities, the Magelis range, ensures the availability of your installation.

2 | Operator dialog



WARNING

This document is a selection of the top selling products.

Control and signalling units

Pushbuttons, switches, pilot lights & control stations

Ø 16, plastic bezel, Harmony XB6	2/2 to 2/4
Ø 8 & 12, pilot lights, Harmony XVL	2/5
Ø 22, metal bezel, Harmony XB4 / Control stations Harmony XAP	2/6 to 2/9
Ø 22, plastic bezel, Harmony XB5 / Control stations Harmony XAL	2/10 to 2/13
Ø 22, plastic bezel - Monolithic, Harmony XB7	2/14 to 2/15
Ø 30, metal and plastic bezel, Harmony 9001K, 9001SK	2/16 to 2/19

Cam switches

Harmony K series	2/20 to 2/21
-------------------------------	--------------

Signalling solutions

Ø 40, 60, 100 mm monolithic tower lights, Harmony XVC	2/22
Ø 45 mm monolithic beacons and tower lights, accessories, Harmony XVDLS / XVC	2/23
Ø 70 mm modular tower lights (IP 66), Harmony XVB	2/24
Ø 70 mm modular tower lights (up to IP 54), Harmony XVE	2/25
Ø 45, 50 mm modular tower lights (up to IP 54), Harmony XVM / XVP	2/26
Modular tower lights accessories, Harmony XV	2/27
Ø 84, 106, 120, 130 mm rotating mirror beacons, Harmony XVR	2/28
Rotating mirrors accessories and sound solutions, Harmony XVR / XVS	2/29

Components for hoisting applications

Pendant control stations, Harmony XAC	2/30 to 2/31
--	--------------

Human/Machine Interfaces

Display units, terminals, Industrial PCs

Small Panels, Magelis STO/STU, XBT N / R / RT	2/32 to 2/34
Advanced Panels, Magelis XBT GT, GK, GTW, GH	2/35 to 2/39
HMI Controllers, Compact Magelis XBT GC	2/40
PC Panels, Magelis Smart, Magelis Compact iPC	2/41
Embedded Box and PC Box, Magelis Smart BOX, Compact BOX & Flex PC BOX	2/42
Front Panels, for Flex PC BOX	2/43
Industrial Display, Magelis iDisplay	2/43

Configuration software

For Magelis XBT N / R / RT, Vijeo Designer Lite	2/44
For Magelis STO/STU, XBT GT, GK, GTW, GH, Magelis Smart, Compact iPC, PC BOX, Vijeo Designer	2/45

Dialog operator for Explosive atmospheres

See Chapter 10 "Explosive atmospheres"



2

Type		Characteristics		
Display	LCD screen size / Resolution	3.4" / monochrome (200 X 80 pixels)		3.5" / QVGA (320 X 240 pixels)
	Type	Green, orange, red	White, pink, red	TFT 65 536 colours
Functions	Representation of variables	Alphanumeric, bitmap, bargraph, gauge, button, light, clock, flashing light, keypad		
	Curves / Alarm logs	Yes, with log / Yes, incorporated		
Communication	Serial link	1 RJ45 (RS 232 - RS 485)		
	Networks	–	–	Ethernet, IEEE 802.3 10/100 BASE-T, RJ45
Downloadable protocols		Mitsubishi (Melsec), Omron (Sysmac), Rockwell Automation (Allen Bradley), Siemens (Simatic) Uni-TE, Modbus, Modbus TCP		
Development software		Vijeo Designer VJD●●●TG●V●●M (on Windows XP, Vista and 7) or Vijeo Designer Limited Edition		
Dimensions W x D x H		113×28×78mm		Front : 98×16×81mm Rear : 118×30×98mm
Compatibility with PLCs		Twido, Modicon TSX Micro, Modicon Premium, Modicon Quantum, Modicon M340		
«Compact Flash» card slot		No		
USB port		1 Host type A + 1 Device type miniB		
Built-in Ethernet TCP/IP		No	No	Yes
Supply voltage		24 VDC		
References		HMI STO511	HMI STO512	HMI STU655

Small Panel
Magelis XBT N
 with matrix, semi-graphic screen (1)



2

Type		Characteristics			
Display	Capacity	2 lines, 20 characters		1 to 4 lines, 5 to 20 characters	
	Type	Back-lit LCD green		Back-lit LCD 3 colours green, orange, red	
Data entry		Via keypad with 8 keys (4 customizable keys)			
Function	Representation of variables	Alphanumeric		Alphanumeric, bargraph, curves, button and light	
	Alarm log	No	Yes	Yes	Yes
Communication	Serial link	1 RJ45 (RS 232 - RS 485)		1 Sub-D25 (RS 232 - RS 485) + 1 miniDin RS232 (2)	
Downloadable protocols		Uni-TE, Modbus Master		Uni-TE, Modbus Master, Siemens, Rockwell, Omron, Mitsubishi, Zelio (2)	
Development software		Vijeo Designer Lite (on Windows XP and Vista)			
Dimensions W x D x H		132 x 37 x 74 mm			
Compatibility with PLCs		Twido, Modicon TSX Micro, Modicon Premium, Modicon M340		Twido, Modicon TSX Micro, Modicon Premium, Modicon Quantum, Modicon Momentum, Modicon M340, Zelio (2)	
Supply voltages		5 VDC or PLC power supply		24 VDC	
References		XBTN200	XBTN400	XBTN410	XBTN401

(1) Except XBTN200: alphanumeric screen.
 (2) For XBTN401 only

Magelis XBT N
 with matrix, semi-graphic screen, dedicated



Type		Characteristics	
Display	Capacity	1 to 4 lines, 5 to 20 characters	
	Type	Back-lit LCD green	Back-lit LCD 3 colours (green, orange, red)
Data entry		Via keypad with 8 keys	
Function	Representation of variables	Alphanumeric, bargraph, curves, button and light	
	Alarm log	Yes	
Communication	Serial link	1 Sub-D25	1 miniDin RS232 + 1 Sub-D25
Downloadable protocols		Modbus	Zelio
Development software		Vijeo Designer Lite (on Windows XP and Vista)	
Dimensions W x D x H		132 x 37 x 74 mm	
Compatibility with PLCs		Motor starter	Zelio
		Tesys Model U	(including connection cable)
Supply voltages		24 VDC	
References		XBTNU400	XBTNSR2 (3)

(3) Including : 1 XBTN401 + 1 cable SR2CBL08 for Zelio

Small Panel Magelis XBT R with matrix, semi-graphic screen (1)



Type		Characteristics			
2	Display	Capacity	4 lines, 20 characters		
		Type	Back-lit LCD green	Back-lit LCD, 3 colours green, orange, red	
	Data entry	Via keypad with 20 keys (12 customizable keys)			
	Function	Representation of variables	Alphanumeric, bargraph, curves, button and light		
		Alarm log	Yes	Yes	Yes
	Communication	Serial link	1 RJ45 (RS 232 - RS 485)	1 Sub-D25 (RS 232 - RS 485) + 1 miniDin (RS232)	
	Downloadable protocols		Uni-TE, Modbus Master	Uni-TE, Modbus Master/Slave (1), Siemens, Rockwell, Omron, Mitsubishi, Zelio (1)	
	Development software	Vijeo Designer Lite (on Windows XP and Vista)			
	Dimensions W x D x H	137 x 37 x 118 mm			
	Compatibility with PLCs	Twido, Modicon TSX Micro, Modicon Premium, Modicon M340	Twido, Modicon TSX Micro, Modicon Premium, Modicon Quantum, Modicon Momentum, Modicon M340, Zelio (1)		
	Supply voltages	5 VDC or PLC power supply	24 VDC		
	References	XBTR400	XBTR410	XBTR411	

(1) For XBTR411 only

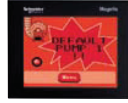
Magelis XBT RT with semi-graphic and touchscreen



Type		Characteristics			
	Display	Capacity	10 lines, 33 characters		
		Type	Back-lit LCD green	Back-lit LCD green, orange, red	
	Data entry	Via keypad with 12 keys (10 customizable keys) or touchscreen			
	Functions	Representation of variables	Alphanumeric, bargraph, curves, button and light		
		Alarm log	Yes	Yes	Yes
	Communication	Serial link	1 RJ45 (RS 232 - RS 485) + 1 miniDin (RS232) (2)		
	Downloadable protocols	Uni-TE, Modbus Master, Siemens, Rockwell, Omron, Mitsubishi			
	Development software	Vijeo Designer Lite (on Windows XP and Vista)			
	Dimensions W x D x H	137 x 37 x 118 mm			
	Compatibility with PLCs	Twido, Modicon TSX Micro, Modicon Premium, Modicon M340, Modicon Quantum, Zelio (2)			
	Supply voltages	5 VDC or PLC power supply	24 VDC		
	References	XBTR500	XBTR511		

(2) For XBTR511 only

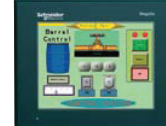
Advanced Panel Magelis XBT GT with 3.8" touchscreen



Type		Characteristics		
Display	LCD screen size / Resolution	3.8" / QVGA		
	Type	STN monochrome, amber or red	TFT 256 colour	
Functions	Representation of variables	Alphanumeric, bitmap, bargraph, gauge, button, light, clock, flashing light, keypad		
	Curves / Alarm logs	Yes, with log / Yes, incorporated		
Communication	Serial link	1 RJ45 (RS 232 - RS 485)		
	Networks	–	Ethernet, IEEE 802.3 10/100 BASE-T, RJ45	
Downloadable protocols	Mitsubishi (Melsec), Omron (Sysmac), Rockwell Automation (Allen Bradley), Siemens (Simatic) Uni-TE, Modbus, Modbus TCP			
Development software	Vijeo Designer VJD●●●TG●V●●M (on Windows XP, Vista and 7)			
Dimensions W x D x H	130x41x104mm			
Compatibility with PLCs	Twido, Modicon TSX Micro, Modicon Premium, Modicon Quantum, Modicon M340			
«Compact Flash» card slot	No			
USB port Host type A	1	1	1	
Built-in Ethernet TCP/IP	No	Yes		
Supply voltage	24 VDC			
References	XBTGT1105	XBTGT1135	XBTGT1335	

2

Magelis XBT GT with 5.7" touchscreen



Type		Characteristics						
Display	LCD screen size / Resolution	5.7" / QVGA					5.7" / VGA	
	Type	STN Monochrome	STN, colour	TFT, colour	65536 colours			
Functions	Representation of variables	Alphanumeric, bitmap, bargraph, gauge, button, light, clock, flashing light, keypad						
	Curves / Alarm logs	Yes, with log / Yes, incorporated						
Communication	Serial link	1 Sub-D9 (RS 232/RS 422 - RS 485) + 1 RJ45 (RS 485)						
	Networks	–	Ethernet, IEEE 802.3 10/100 BASE-T, RJ45	–	Ethernet, IEEE 802.3 10/100 BASE-T, RJ45	Ethernet 10/100 BASE-T	Ethernet, IEEE 802.3 10/100 BASE-T, RJ45	
Downloadable protocols	Mitsubishi (Melsec), Omron (Sysmac), Rockwell Automation (Allen Bradley), Siemens (Simatic) Uni-TE, Modbus, Modbus TCP/IP							
Development software	Vijeo Designer VJD●●●TG●V●●M (on Windows XP, Vista and 7)							
Dimensions W x D x H	167.5x60x135mm							
Compatibility with PLCs	Twido, Modicon TSX Micro, Modicon Premium, Modicon Quantum, Modicon M340, Modicon Momentum							
«Compact Flash» card slot	No	Yes						
USB port Host type A	1						2	
Video in	No							
Built-in Ethernet TCP/IP	No	No	Yes	No	Yes	Yes	Yes	
Supply voltage	24 VDC							
References	XBTGT2110	XBTGT2120	XBTGT2130	XBTGT2220	XBTGT2330	XBTGT2930	XBTGT2430	

Advanced Panel Magelis XBT GT with 7.5" and 10.4" touchscreen



Type		Characteristics						
2 Display	LCD screen size / Resolution	7.5" / VGA			10.4" / VGA			10.4" / SVGA
	Type (colour)	STN	TFT	TFT	STN	TFT	TFT	TFT
	Number of colours	4096	65536	65536	4096	65536	65536	65536
Functions	Representation of variables	Alphanumeric, bitmap, bargraph, gauge, button, light, clock, flashing light, keypad						
	Curves / Alarm logs	Yes, with log / Yes, incorporated						
Communication	Serial link	1 Sub-D9 (RS 232/RS 422 - RS 485) + 1 RJ45 (RS 485)						
	Networks	Ethernet, IEEE 802.3 10/100 BASE-T, RJ 45						
Downloadable protocols		Mitsubishi (Melsec), Omron (Sysmac), Rockwell Automation (Allen Bradley), Siemens (Simatic) Uni-TE, Modbus, Modbus TCP/IP						
Development software		Vijeo Designer VJD●●●TG●V●●M (on Windows XP, Vista and 7)						
Dimensions W x D x H (mm)		215x60x170			313x56x239		271x57x213	
Compatibility with PLCs		Twido, Modicon TSX Micro, Modicon Premium, Modicon Quantum, Modicon M340						
«Compact Flash» card slot		Yes						
USB port Host type A		1	1	1	2	2	2	2
Video in		No	No	Yes	No	No	Yes	No
Built-in Ethernet TCP/IP		Yes						
Supply voltage		24 VDC						
References		XBTGT4230	XBTGT4330	XBTGT4340	XBTGT5230	XBTGT5330	XBTGT5340	XBTGT5430

Magelis XBT GT with 12.1" and 15" touchscreen



Type		Characteristics		
Display	LCD screen size / Resolution	12,1" / SVGA		15" / XGA
	Type (colour)	TFT	TFT	TFT
	Number of colours	65536	65536	65536
Functions	Representation of variables	Alphanumeric, bitmap, bargraph, gauge, button, light, clock, flashing light, keypad		
	Curves / Alarm logs	Yes, with log / Yes, incorporated		
Communication	Serial link	1 Sub-D9 (RS 232/RS 422 - RS 485) + 1 RJ45 (RS 485)		
	Networks	Ethernet, IEEE 802.3 10/100 BASE-T, RJ 45BASE-T, RJ 45		
Downloadable protocols		Mitsubishi (Melsec), Omron (Sysmac), Rockwell Automation (Allen Bradley), Siemens (Simatic) Uni-TE, Modbus, Modbus TCP/IP		
Development software		Vijeo Designer VJD●●●TG●V●●M (on Windows XP, Vista and 7)		
Dimensions W x D x H (mm)		313x56x239		395x60x294
Compatibility with PLCs		Twido, Modicon TSX Micro, Modicon Premium, Modicon Quantum, Modicon M340		
«Compact Flash» card slot		Yes		
USB port Host type A		2		
Video in		No	Yes	Yes
Built-in Ethernet TCP/IP		Yes		
Supply voltage		24 VDC		
References		XBTGT6330	XBTGT6340	XBTGT7340

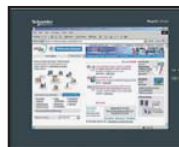
Advanced Panel Magelis XBT GK with touchscreen and keypad



Type		Characteristics		
Display	Screen size / Resolution	5.7" / QVGA		10.4" / VGA
	Type	STN monochrome black and white	TFT Colour 65536 colours	
Data entry	Soft function keys with LED	14		18
	Static function keys with LED	10 + legends		12 + legends
	Service keys / Alphanumeric keys	8 / 12		
	Touchscreen and industrial pointer	Yes		
Functions	Representation of variables	Alphanumeric, bitmap, bargraph, gauge, button, light, clock, flashing light, keypad		
	Curves	Yes, with log		
	Alarm logs	Yes		
Communication	Serial link	1 Sub-D9 (RS 232/RS 422 - RS 485) + 1 RJ45 (RS 485)		
	Networks	– Ethernet, IEEE 802.3 10/100 BASE-T, RJ 45		
Downloadable protocols		Mitsubishi (Melsec), Omron (Sysmac), Rockwell Automation (Allen Bradley), Siemens (Simatic) Uni-TE, Modbus, Modbus TCP/IP		
Development software		Vijeo Designer VJD●●●TG●V●●M (on Windows XP, Vista and 7)		
«Compact Flash» card slot		Yes		
Dimensions W x D x H		220,3x88x265mm	296x91x332mm	197x92,6x147mm
Compatibility with PLCs		Twido, Modicon TSX Micro, Modicon Premium, Modicon Quantum, Modicon M340		
USB port		1	1	2
Video in		No	No	No
Built-in Ethernet TCP/IP		No	Yes	
Supply voltage		24 VDC		
References		XBTGK2120	XBTGK2330	XBTGK5330

2

Magelis XBT GTW with 8.4", 12", 15" touchscreen



Type		Characteristics		
Pre-installed Software		OS: Windows XP Embedded, Internet Explorer, Office & Acrobat Reader, .NET, Vijeo Designer Run Time unlimited – Vijeo Citect Web Client		
Touchscreen		8.4 LCD TFT	12 LCD TFT	15 LCD TFT
Resolution		SVGA 800 x 600	SVGA 800 x 600	XGA 1024 x 768
Font panel ports		–	1 x USB	1 x USB
Processor		Celeron M @ 600 MHz	Celeron M @ 1 GHz	Celeron M @ 600 MHz
RAM		512MB ► 1024MB	512MB ► 1024MB	512MB ► 1024MB
Storage		CF 1GB expandable to 4GB	CF 2GB expandable to 4GB	CF 2GB expandable to 4GB
Extension		–	1 x PCMCIA slot (for 1 type II card)	1 PCMCIA slot (for 1 type III card or 2 type I cards)
Ethernet ports		2 (10/100/1G + 10/100)	2 (10/100/1G + 10/100)	2 (10/100/1G + 10/100)
Ports I/O		4 x USB, 2 x RS232	4 x USB, 1 x RS232	4 x USB, 2 x RS232
Power supply		24 VDC		
Dimension		230 x 177 x 65	313 x 239 x 60	395 x 294 x 65
References		XBTGTW450	XBTGTW652	XBTGTW750



2

Type		Characteristics	
+ Screen			
Display	screen size / Resolution	5,7" / VGA	
	Type (colour)	TFT	
	Number of colours	65 536	
Data entry	Function keys	11 + label	
	Operaton key	1 with LED (validation touchscreen)	
Safety components	Key Switch	Yes for ON/OFF	
	3 positions Enable switch	Yes, OK signal in intermediate position only	
	Emergency stop	Yes, red with 2 safe contacts and one auxiliary contact	
Functions	Representation of variables	Alphanumeric, bitmap, bargraph, gauge, button, light, clock, flashing light, keypad	
	Curves / Alarm historic	Yes, with log / Yes, incorporated	
Connection	24-pins connector (communication, alimentation, I/O)		
Downloadable protocols	Mitsubishi (Melsec), Omron (Sysmac), Rockwell Automation (Allen Bradley), Siemens (Simatic)		
Development software	Uni-TE, Modbus, Modbus TCP/IP		
«Compact Flash» card slot	Vijeo Designer VJD●●●TG●V●●M (on Windows XP, Vista and 7)		
Dimensions W x D x H (mm)	Yes		
USB port	224 x 174 x 87,1		
Supply voltage	1		
Reference	24 VDC		
Reference		XBT GH2460	
+ Cable interface		connection with junction box	
Type of connector	2 x 24-pins speed connectors		
Length	3 m	10 m	
Reference	XBTZGHL3	XBTZGHL10	
+ Junction box		connection with PLCs	
Communcation	Serial link	1 SubD9 (RS232 / RS422 - RS 425)	
	Network	1 Ethernet RJ45 IEEE 802.3 10/100 T-BASE,	
Connection	24 pins connector	Interface cable 3 or 10 m	
	Screw terminals blocks	For alimentation 24 VDC, state of I/O safety components	
Reference	XBTZGJBOX		



Connection cables	PC to Magelis transfer cables		
	2.5 m	2 m	1,8 m
Application	PC to XBTN / R / RT	PC to XBTGT / GK / GTW	PC to HMI STO/STU
Type of connector	RJ45/RJ45	USB/USB	
Physical link	RS 485	-	
References	XBTZ925 (1)	XBTZG935	BMXXCAUSBH018

2

(1) Adaptor TSXCUSB485 for linking USB port of PC, to be used with connecting cables XBTZ925

Cards and gateways for fieldbus	Modbus Plus	FIPWAY / FIPIO	Profibus DP	Device Net
Application	XBTGT/GK			
References	XBTZGUMP	TSXCUSBFIP	XBTZGPDP	XBTZGDVN

Connection cables	PLC connection cables (2.5 m)						
Application	XBTN401, XBTR411, XBTRT511, Zelio	XBTGT, GK, N200, N400, R400 RT, HMI STO/STU Modicon M340	Twido, Modicon TSX Micro, Modicon Premium	XBTGT,GK,GTW to: Modicon Quantum	XBT N410, N401, R410, R411 to: Twido Modicon TSX Micro, Modicon Premium	Modicon Quantum	Modicon M340
Type of connector	miniDin, Zelio port	RJ45/RJ45	RJ45 / MiniDin	SUB D 9 / SUB D 9	MiniDin / SUB D 25	SUB D 9 / SUB D 25	RJ45 / SUB D 25
Physical link	RS 232	RS 485	RS 485	RS 232	RS 485	RS 232	RS 485
References	SR2CBL08	XBTZ9980	XBTZ9780	990NAA26320	XBTZ968	XBTZ9710	XBTZ938

«Compact Flash» card						
Memory	128 Mo	256 Mo	512 Mo	1 Go	2 Go	4 Go
Application	XBT GT / GK / GH / GTW					
References	XBTZGM128	XBTZGM256	MPCYN00CFE00N	MPCYN00CF100N	MPCYN00CF200N	MPCYN00CF400N

Connection cables	off-set USB	
Application	XBT GT / GC / GK / GTW and HMI STO / STU	
Type of connector	USB A / USB A	HMI STO/STU USB miniB / USB miniB
Reference	XBTZGUSB	HMIZSUSBB

Certifications Magelis XBT range: Depending on model*

* For more information, consult your HMI catalog.





2

Type		Characteristics		
Display	LCD screen size / Resolution	3,8" / QVGA	5,7" / QVGA	
	Type	STN monochrome, amber or red	STN monochrome, gray	STN 4096 colours
Functions	Representation of variables	Alphanumeric, bitmap, bargraph, gauge, button, light, clock, flashing light, keypad		
	Curves / Alarm logs	Yes, with log / Yes, incorporated		
	Control	5 languages IEC		
Communication	Serial link	–	1 Sub9 (RS 232/RS 422 - RS 485)	
	Networks	–	–	Ethernet, IEEE 802.3 10/100 BASE-T, RJ45
Downloadable protocols		Mitsubishi (Melsec), Omron (Sysmac), Rockwell Automation (Allen Bradley), Siemens (Simatic) Uni-TE, Modbus, Modbus TCP		
Development software		SoMachine (on Windows XP and Vista)		
Dimensions W x D x H		130x76x104mm	207x76x157mm	
Compatibility with PLCs		Twido, Modicon TSX Micro, Modicon Premium, Modicon Quantum, Modicon M340		
«Compact Flash» card slot		No		
USB port Host type A		1	1	1
Built-in Ethernet TCP/IP		No	No	Yes
Integrated I/O		12I/6O 24 VDC	16I/16O 24 VDC	
Extensions		2 modules TM2 or CANopen module	3 modules TM2 or CANopen module	
Supply voltage		24 VDC		
References	Source Output	XBTGC1100T	XBTGC2120T	XBTGC2230T
	Sink Output	XBTGC1100U	XBTGC2120U	XBTGC2230U

Extensions

Type of module	CANopen Master						
Characteristics	Class M10 limited 16 slaves, Standard DS301 V4.O2						
References	XBTZGCCAN						

Type of module	Digitals Inputs / Outputs						
Characteristics	8I 24 VDC Screw terminal	16I 24 VDC Screw terminal	16I 24 VDC HE10	32I 24 VDC HE10	8I 120 VAC Screw terminal	4I 24 VDC 40 Relays Screw terminal	16I 24 VDC 80 Relays Screw terminal
References	TM2DDI8DT	TM2DDI16DT	TM2DDI16DK	TM2DDI32DK	TM2DAI8DT	TM2DMM8DRT	TM2DMM24DRF

Type of module	Digitals Inputs / Outputs					
Characteristics	8O Transistor 24 VDC Screw terminal	16O Transistor 24 VDC HE10	32O Transistor 24 VDC HE10	8O Relays 230 VAC 30 VDC Screw terminal	16O Relays 230 VAC 30 VDC Screw terminal	–
References	Source Output	TM2DD08TT	TM2DD016TK	TM2DD032TK	TM2DRA8RT	TM2DRA16RT
	Sink Output	TM2DD08UT	TM2DD016UK	TM2DD032UK	–	–

Type of module	Analog Inputs / Outputs					
Characteristics	2I Current/Voltage	2I Thermocouple	4I Current/Voltage Temperature	8I Current/Voltage	8I Temperature	8I PTC
References	TM2AMI2HT	TM2AMI2LT	TM2AMI4LT	TM2AMI8HT	TM2ARI8LRJ TM2ARI8LT	TM2ARI8HT

Type of module	Analog Inputs / Outputs				
Characteristics	1O Current/Voltage	2O Voltage	2I Current/Voltage 1O Current/Voltage	2I Temperature 1O Current/Voltage	4I Current/Voltage 2O Current/Voltage
References	TM2AMO1HT	TM2AVO2HT	TM2AMM3HT	TM2ALM3LT	TM2AMM6HT

PC Panels
Magelis Smart
with 8.4", 12", 15" touchscreen



	Smart 8.4	Smart 12	Smart 15
Pre-installed Software	OS: Windows XP Embedded, Internet Explorer, Office & Acrobat Reader, .NET		
Touch screen	8.4" LCD TFT	12" LCD TFT	15" LCD TFT
Resolution	SVGA 800x600	SVGA 800x600	XGA 1024x768
Front side port	–	1 x USB	1 x USB
Processor	Celeron M@600MHz	Celeron M@1GHz	Celeron M@600MHz
RAM	512MB ► 1024MB	512MB ► 1024MB	512MB ► 1024MB
Storage	CF 1GB expandable to 4GB	CF 2GB expandable to 4GB	CF 2GB expandable to 4GB
Extension	–	1 x PCMCIA slot (for 1 type II card)	1 PCMCIA slot (for 1 type III card or 2 type I cards)
Ethernet ports	2 (10/100/1G + 10/100)	2 (10/100/1G + 10/100)	2 (10/100/1G + 10/100)
I/O ports	4 x USB, 2 x RS 232	4 x USB, RS 232	4 x USB, RS 232
Certification	UL 508, CSA 142, Marine (1)	UL 508, CSA 142	UL1604 (Haz-Loc Class 1 Div 2) (1)
Dimensions	230 x 177 x 65	313 x 239 x 60	395 x 294 x 65
iPC without maintenance (Compact Flash disk)	License VJDSNRTMPC for Vijeo Designer Run Time ≥ 5.1, unlimited, to be ordered separately.		
	AC	MPCST11NAJ00T	MPCST21NAJ20T
	DC	MPCST11NDJ00T	MPCST21NDJ20T

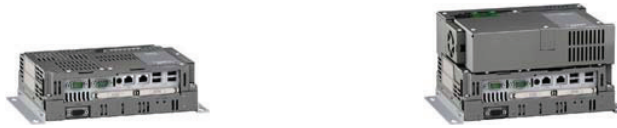
(1) DC version, only

2

Magelis Compact iPC
with 8.4", 12", 15" touchscreen



	Compact iPC 8.4"	Compact iPC 12"	Compact iPC 15"	
Pre-installed Software	Windows XP PRO, Vijeo Designer Run Time Demo			
Touch screen	8.4" LCD TFT	12" LCD TFT	15" LCD TFT	
Resolution	SVGA 800x600	XGA 1024x768	XGA 1024x768	
Front side port	–	1 x USB	1 x USB	
Processor	Celeron M@1GHz	Celeron M@1.5 GHz	Pentium M@1.6GHz	
RAM	512MB ► 1024MB	512MB ► 1024MB	512MB ► 2GB 1,5GB ► 2GB	
Drive devices	–	–	DVD writer	
Storage	HDD ≥ 80 GB	HDD ≥ 160 GB or Flash disk 15 GB	HDD ≥ 80 GB or Flash disk 15 GB	
Extension	–	1 PCMCIA slot (for 1 type II card)	1 PCMCIA slot (for 1 type III card or 2 type I card)	
Ethernet ports	2 (10/100/1G + 10/100)	2 (10/100/1G + 10/100)	2 (10/100/1G + 10/100)	
I/O ports	4 x USB, 2 x RS 232	4 x USB, 1 x RS 232	4 x USB, 4 x RS 232	
Certification	UL508, CSA	UL508, CSA	UL508, CSA, UL1604 (Haz-Loc Class 1, Div 2)	
Dimensions	230 x 177 x 120	313 x 239 x 100	395 x 294 x 100	
General Purpose (Hard Drive)	License VJDSNRTMPC for Vijeo Designer Run Time ≥ 5.1, unlimited, to be ordered separately.			
	AC	MPCKT12NAX00N	MPCKT22NAX20N	
	DC	–	MPCKT55NAX20N	
Heavy Duty (Flash disk)	AC	–	MPCKT55NDX20N	
	AC	–	MPCKT22MAX20N	
	AC	–	MPCKT55MAX20N	
	SCADA Edition (Vijeo Citect)	AC	–	–
	Vijeo Citect Lite 1200 I/O	–	–	MPCKT55MAX20L
	Vijeo Citect Full 500 I/O	–	–	MPCKT55MAX20V



		Smart BOX	Compact PC BOX	
2	Pre-installed Software	Windows XP PRO, Vijeo Designer Run Time Demo		
	Processor	Celeron M@600MHz	Celeron M@1GHz	
	RAM Default ▶ Max	256MB ▶ 1024MB	512MB ▶ 1024MB	
	Storage	CF 1 GB	HDD ≥ 80 GB	
	Drives	–	–	
	Extension	–	1 x PCI	
	Video ports	1 x RGB	1 x RGB	
	Ethernet ports	2 (10/100/1G + 10/100)	2 (10/100/1G + 10/100)	
	I/O ports	4 x USB, 2 x RS 232	4 x USB, 2 x RS 232	
	Certification	UL508, CSA, UL1604 (Haz-Loc Class 1 Div 2), ATEX2-22, Marine DNV (1)	UL508, CSA	
	Connection for iDisplay	Yes	Yes	
	Connection for Front Panel	No	No	
	Dimensions	218 x 165 x 65	218 x 165 x 115	
	iPC General Purpose (Hard Drive)	License VJDSNRTMPC for Vijeo Designer Run Time ≥ 5.1, unlimited, to be ordered separately. AC	–	MPCKN02NAX00N
	iPC without maintenance (Compact Flash disk)	License VJDSNRTMPC for Vijeo Designer Run Time ≥ 5.1, unlimited, to be ordered separately. AC DC	MPCSN01NAJ00T (2) MPCSN01NDJ00T	–

(1) Marine DNV and ATEX 2-22 on DC version only

(2) With delivered external alimentation adaptor

Magelis Flex PC BOX



		Flex PC BOX F			Flex PC BOX H		
Pre-installed Software		Windows XP PRO, Vijeo Designer Run Time Demo					
Processor		Celeron M1,86Ghz	Core Duo 2Ghz		Celeron M1,86Ghz	Core Duo 2Ghz	
RAM Default ▶ Max		512MB>2GB	1GB>2GB	2GB	512MB>2GB	1GB>2GB	2GB
Storage		HDD ≥ 160GB with option RAID or Flash Disk 15GB			HDD ≥ 160GB with option RAID or Flash Disk 15GB		
Drives		Reader DVD	Engraver DVD		Reader DVD		
Extension		2PCI			4PCI		
Video ports		1 x DVI-I (RGB)					
Ethernet ports		2 (10/100/1 G + 10/100)					
I/O ports		4 x USB, 4 x RS 232					
Certification		UL508, cUL, UL1604 (Haz-Loc Class 1 Div 2), ATEX2-22 (1)					
Connection for iDisplay		Yes					
Connection for Front Panel		Yes					
Dimensions		243 x 160 x 289			243 x 205 x 289		
iPC General Purpose (Hard Drive)	License VJDSNRTMPC for Vijeo Designer Run Time ≥ 5.1, unlimited, to be ordered separately. AC DC	MPCFN02NAX00N	MPCFN05NAX00N	–	MPCHN02NAX00N	MPCHN05NAX00N	–
Heavy Duty (Flash disk)	AC	–	MPCFN05NDX00N	–	MPCHN02NDX00N	MPCHN05NDX00N	–
Heavy Duty (Flash disk) Vijeo Citect full 500 I/O	AC	–	–	MPCFN05MAX00N	–	MPCHN05MAX00N	–
		–	–	MPCFN05MAX00V	–	–	MPCHN05MAX00V

(1) ATEX 2/22 for DC version only

Front Panel

Magelis iPC

To be connected only with Magelis Flex PC BOX



Front Panel	12" touch & keypad	15" touch & keypad	15" touch	19" touch
Touchscreen	12" LCD TFT	15" LCD TFT	15" LCD TFT	19" LCD TFT
Resolution	SVGA 800x600	XGA 1024x768	XGA 1024x768	SXGA 1280x1024
Front side port	1 x USB	1 x USB	1 x USB	1 x USB
Dimensions	420 x 320 x 31	483 x 365 x 31	420 x 320 x 31	460 x 390 x 44
References	MPCYB20NNN00N	MPCYB50NNN00N	MPCYT50NNN00N	MPCYT90NNN00N

2

Industrial Display

Magelis iDisplay

with 15", 19" touchscreen



	15" touch & keypad	15" touch	19" touch
Touchscreen	15" LCD TFT	15" LCD TFT	19" LCD TFT
Resolution	XGA 1024x768	XGA 1024x768	SXGA 1280x1024
Front side port	1 x USB	1 x USB	1 x USB
Video ports	1 x VGA & 1 x DVI	1 x VGA & 1 x DVI	1 x VGA & 1 x DVI
Touchscreen ports	1 x USB & 1 x RS 232	1 x USB & 1 x RS 232	1 x USB & 1 x RS 232
Power supply	100...240VAC	100...240VAC	100...240VAC
Certification	UL508, CSA	UL508, CSA	UL508, CSA
Dimensions	483 x 365 x 65	395 x 294 x 60	460 x 390 x 65
References	MPCNB50NAN00N	MPCYT50NAN00N	MPCYT90NAN00N

Vijeo Designer Lite — Configuration software

Magelis XBT N, R, RT



Vijeo Designer Lite configuration software enables the creation of simple operator dialogue applications on Magelis XBT N, R and RT Small Panel ranges.

It also enables transparent recovery of all applications for Magelis XBT N and R produced using its predecessor: XBT L1000.

For simplified installation and improved consistency, Vijeo Designer Lite retains the main characteristics of Vijeo Designer software (ergonomics, interface ...) which has become the reference in the HMI field.

Configuration

Vijeo Designer Lite software enables fast and easy creation of different types of pages (application page, alarm pages, help pages...) and the installation of navigation between pages.

It offers:

- Graphic objects developed for Magelis XBT RT (bar charts, trend curves...)
- Character fonts Byzantine, simplified Chinese, Cyrillic, Japanese
- Project reports
- Application simulation on PC
- Six languages : English, French, German, Italian, Spanish and Chinese.

Selection guide

Number of licenses

Single (1)

Composition

Without cable
With USB cable

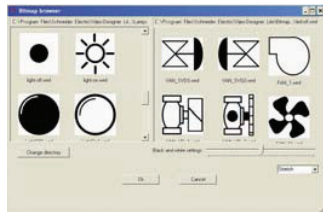
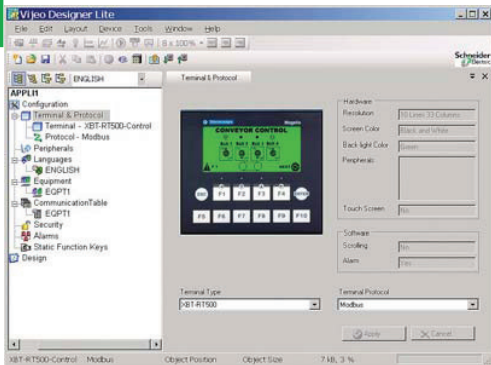
References

VJDSNDTMSV●●M
VJDSUDTMSV●●M

Software is delivered on CD-ROM and can be executed under Windows 2000, XP and Vista.
●● represents version number.

These references are downloadable on Schneider-Electric.com

2



* Available with Vijeo Designer ≥ 5.0



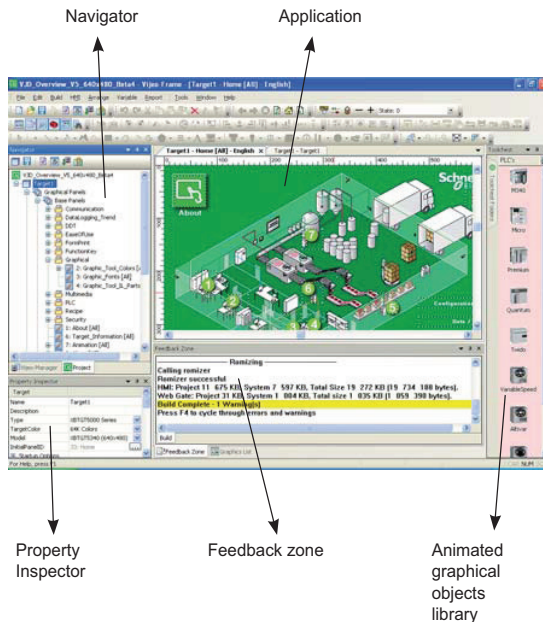
Vijeo Designer configuration software enables creation of automated system control operator dialogue applications for Magelis STO/STU, XBT GT, GK, GTW, GH terminals and Smart & Compact iPC and PC BOX. It also enables management of the multimedia functions of XBT GTW and Smart & Compact iPC (video and audio) and offers users of Ethernet terminals and iPC remote access via a Web browser (WEB Gate function).

Configuration

Vijeo Designer configuration software enables fast, simple processing of operator dialogue projects thanks to its ergonomics, developed around 6 configurable windows.

It also offers comprehensive application management tools:

- . Project creation; projects comprising one or several targets (terminal or iPC).
- . Recipe editor (32 groups of 256 recipes of max. 1024 ingredients).
- . User action list (eg. script) for application adaptability.
- . Application variable cross-referencing.
- . Vectorial graphic library for more attractive graphic screens.
- . Application block diagram documentation.
- . Simulation mode for simple design office application testing.
- . High-performance graphic editor for simple block diagram creation (over 30 animated preconfigured generic objects).
- . Support of layers and masks for faster development.
- . Data sharing (up to 300 variables on 8 terminals).
- . Management of 40 alphabet (including simplified Chinese, Korean, Arabic and Hebrew) with the opportunity to have 15 languages per application and dynamic change.
- . Programmable controller database sharing (Unity Pro, PL7, Concept, TwidoSoft, ProWORX, ModSoft), process variables or operators actions
- . Advanced traceability function (periodic, at event or on request).
- . Project backup on terminal for simple maintenance.
- . User-friendly data recovery tool.
- . Support of standard USB peripherals (USB key up to 4 GB).
- . Support of external USB keyboards and mice.
- . Integration with Schneider Electric equipment (buffer diag., variables access, Unity DDT and unlocated variables.)
- . Event-triggered e-mail function
- . Over 35 third party protocols
- . Multilingual software : English, French, German, Italian, Spanish, Portuguese and Simplified Chinese.
- . Printing function



Selection guide

Number of licences	Composition	References
Single (1)	Without cable With USB cable	VJDSNDTGSV●●M VJDSUDTGSV●●M
Group (3)	Without cable	VJDGNDTGSV●●M
Team (10)	Without cable	VJDTNDTGSV●●M
Facility (Unlimited)	Without cable	VJDFNDTGSV●●M

The software is supplied on DVD and runs under Windows XP, Windows Vista and Windows 7.

●● represent the version number.

Runtime pour Magelis iPC	Composition	References
Single (1)	Without cable	VJDSNRTMPC